














NEMETSCHKE GROUP

2019
COMPETENCES
& REFERENCES

Driving digital transformation
**SHAPING THE ENTIRE
BUILDING LIFECYCLE**

NEMETSCHKE GROUP

ARCHITECTURE | ENGINEERING | CONSTRUCTION (AEC)

DESIGN		BUILD		MANAGE	MEDIA & ENTERTAINMENT
					
ALLPLAN	GRAPHISOFT.	NEVARIS	CREM SOLUTIONS	MAXON	
 VECTORWORKS	 SCiA	 BLUEBEAM	 SPACEWELL		
 DATA DESIGN SYSTEM	 FRILO	 SDS/2			
PRECAST <small>SOFTWARE engineering</small>	 IRISA				
SOLIBRI	 dRofus				




Nemetschek is the innovation driver of digital transformation throughout the entire lifecycle of buildings.

Close to the customer. Strong on growth. Future-proof.

As a globally active corporate group, the Nemetschek Group covers the entire lifecycle of buildings and infrastructure projects with its software solutions, thus making a significant contribution towards greater efficiency and quality as well as towards controlling time and costs in the construction sector.

In the digital age, building clients have clear requirements and expectations for the AEC industry: planning which is as creative as it is precise, an efficient building process with optimum harmonization of the trades among one another, reliable scheduling and valid cost forecasts. The prerequisite for this, however, is an open and continuous flow of all data and information between everyone involved in the process. This only succeeds if the entire lifecycle of a building is considered and digitally captured, from the initial drafts of the designers and architects, through the building process itself, all the way to the subsequent management of building once it is completed.

OUR CUSTOMER-ORIENTED SEGMENTS AND THEIR TARGET AND USER GROUPS

		
DESIGN	BUILD	MANAGE
Architecture and Design Offices	Building Contractors	Building Managers
Structural Engineers	General Managers/Contractors	Facility Managers
Engineers of all Types	Process Controllers	Property Managers
Project Developers	Plant Contractors	Building Owners



Innovative and focused

This is precisely the unique expertise of the Nemetschek Group. With its four segments, it serves all stages of this lifecycle with solutions that are optimally tailored to the respective target and user groups and improved on an ongoing basis.

The inherent innovative power and innovative capability lie in the proximity to the customer. The common denominator of all the solutions is Open Building Information Modeling (Open BIM), a digital work method with open interfaces facilitating the crucial networking of all process stakeholders.

Close to the customer

The only way to develop the right solutions is to maintain a close dialog with the customer and consistently align with the customer's needs. The Nemetschek Group's target groups vary widely: they range from architects and engineers from all fields to bridge and structural designers, and from steel construction builders and building material manufacturers to property developers, facility managers and appraisers for quality control.

The key to being able to serve such a broad spectrum of customers lies in the special divisional structure of the Nemetschek Group: 4 segments with 16 brands which independently serve their respective markets and customers, under the umbrella of a holding that guides the strategy. This structure guarantees a close connection with customers and a continuous exchange of ideas with the market. In addition, Nemetschek, founded in 1963, is a pioneer in the software sector and has been an institution in the AEC industry for decades. This too guarantees proximity to the customer.

Strong on growth and future-proof

Recognize demand, offer innovative solutions, successfully distribute those solutions. The economic result of this strategy is a story of sustainable growth. For years now, Nemetschek has stood for double-digit growth rates in terms of revenue, high levels of profitability, successful internationalization and an excellent reputation on the capital market.

What has been achieved is the basis for the continued successful development of the Nemetschek Group – solidly anchored in all submarkets and leading the way as an innovation driver in an industry that continues to grow.

From Design to Manage

The complete lifecycle of a building is varied. The Nemetschek Group offers a portfolio that covers all areas of design, construction and building management, from the initial idea to all the design and implementation steps and the building process all the way to management of the facility, finances, and personnel. Worldwide.

For further references please visit the Nemetschek Group website:
www.nemetschek.com/en/competences-references/reference-projects.

GRAPHISOFT



Bunjil Place Australia

Pages 8–9

PRECAST



Seestadt aspern Austria

Pages 16–17

SCIA



Al Janoub Stadium Qatar

Pages 18–19

RISA



North Carolina A&T College of Education, USA

Pages 20–21

BLUEBEAM



Wardian London Great Britain

Pages 28–29

SDS/2



Parkview Health Hospital USA

Pages 30–31

NEVARIS



Brenner Base Tunnel Austria

Pages 32–33

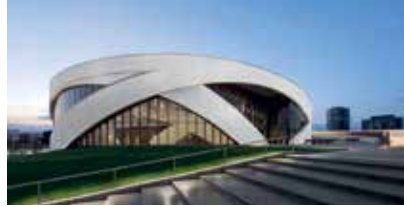
ALLPLAN



**Tamina Bridge
Switzerland**

Pages 10–11

VECTORWORKS



National Veterans Memorial and Museum, USA

Pages 12–13

FRILO



**Finnish Pavilion
Japan**

Pages 14–15

DATA DESIGN SYSTEM



**Training Center
Germany**

Pages 22–23

SOLIBRI



**REDI/Loisto Tower
Finland**

Pages 24–25

dROFUS



**New Deichman Library
Norway**

Pages 26–27

CREM SOLUTIONS



**Kö-Bogen
Germany**

Pages 34–35

SPACEWELL



**Van Roey Group Head-
quarters, Belgium**

Pages 36–37

MAXON



**The Landing
Germany**

Pages 38–39



GRAPHISOFT®

GRAPHISOFT is one of the world's leading BIM software solution developer for architects and designers.

SEGMENT: DESIGN

COMPANY SIZE: 621 Employees

LOCATIONS: **Budapest**, Beijing, Boston, Hong Kong, London, Mexico City, Moscow, Munich, São Paulo, Singapore, Tokyo, Venice

WEBSITE: www.graphisoft.com

REFERENCE PROJECT:

Bunjil Place
Narre Warren, Australia

ARCHITECTS: fjmt

PROJECT DESCRIPTION:

Bunjil Place is an example of a new type of community and municipal building that includes a library, theater, gallery, exhibition space, service center, and flexible spaces for gatherings of all kinds. A central theme was the meaning of “land in the aboriginal culture”.



ALLPLAN

ALLPLAN is a global provider of BIM solutions for the AEC industry.

SEGMENT: DESIGN

COMPANY SIZE: 417 Employees

LOCATIONS: **Munich**, Ashby de la Zouch, Bratislava, Graz, Madrid, Paris, Prague, Salzburg, Trento, West Chester, Zurich

WEBSITE: www.allplan.com

REFERENCE PROJECT:

Tamina Bridge
St. Gallen, Switzerland

ENGINEERING OFFICE: Leonhardt, Andrä und Partner

PROJECT DESCRIPTION:

With an arched span of 265 meters, a superstructure length of 417 meters and a height of 220 meters above the valley floor, the Tamina Bridge is the largest arched bridge in Switzerland. By the end of construction, 14,000 m³ of concrete and 3,000 tons of reinforcement had been installed.



Vectorworks is an award-winning design and BIM software provider serving the architecture, landscape architecture and entertainment industries.

SEGMENT: DESIGN

COMPANY SIZE: 240 Employees

LOCATIONS: **Columbia**, Atlanta, London, Newbury, Vancouver

WEBSITE: www.vectorworks.net



REFERENCE PROJECT:

National Veterans Memorial and Museum
Columbus, USA

ARCHITECTS: Allied Works Architecture

PROJECT DESCRIPTION:

Allied Works Architecture won an international competition to design the National Veterans Memorial and Museum. The team aimed to make an iconic civic space that tells the stories of veterans. The museum is situated in a generous green space and contains various event rooms.



FRILO Software has been, for more than 40 years, one of the leading providers of innovative calculation programs for structural engineering tasks.

SEGMENT: DESIGN

COMPANY SIZE: 46 Employees

LOCATIONS: **Stuttgart, Dresden**

WEBSITE: www.friilo.eu



REFERENCE PROJECT:

Finnish Pavilion
Tokyo, Japan

DESIGN: Metsä Wood and Helin & Co. Architects

PROJECT DESCRIPTION:

For the 2020 Olympic Games, a wooden pavilion will be erected in the center of Tokyo, Japan, on the grounds of the Finnish Embassy. It is to be used by Finnish athletes and companies. The pavilion is an example of innovative architecture based on industrially manufactured wooden elements.



PRECAST | SOFTWARE
engineering

Precast Software Engineering is a leading software company in the precast concrete parts industry.

SEGMENT: DESIGN

COMPANY SIZE: 47 Employees

LOCATIONS: **Salzburg**, Shanghai, Singapore

WEBSITE: www.precast-software.com



REFERENCE PROJECT:

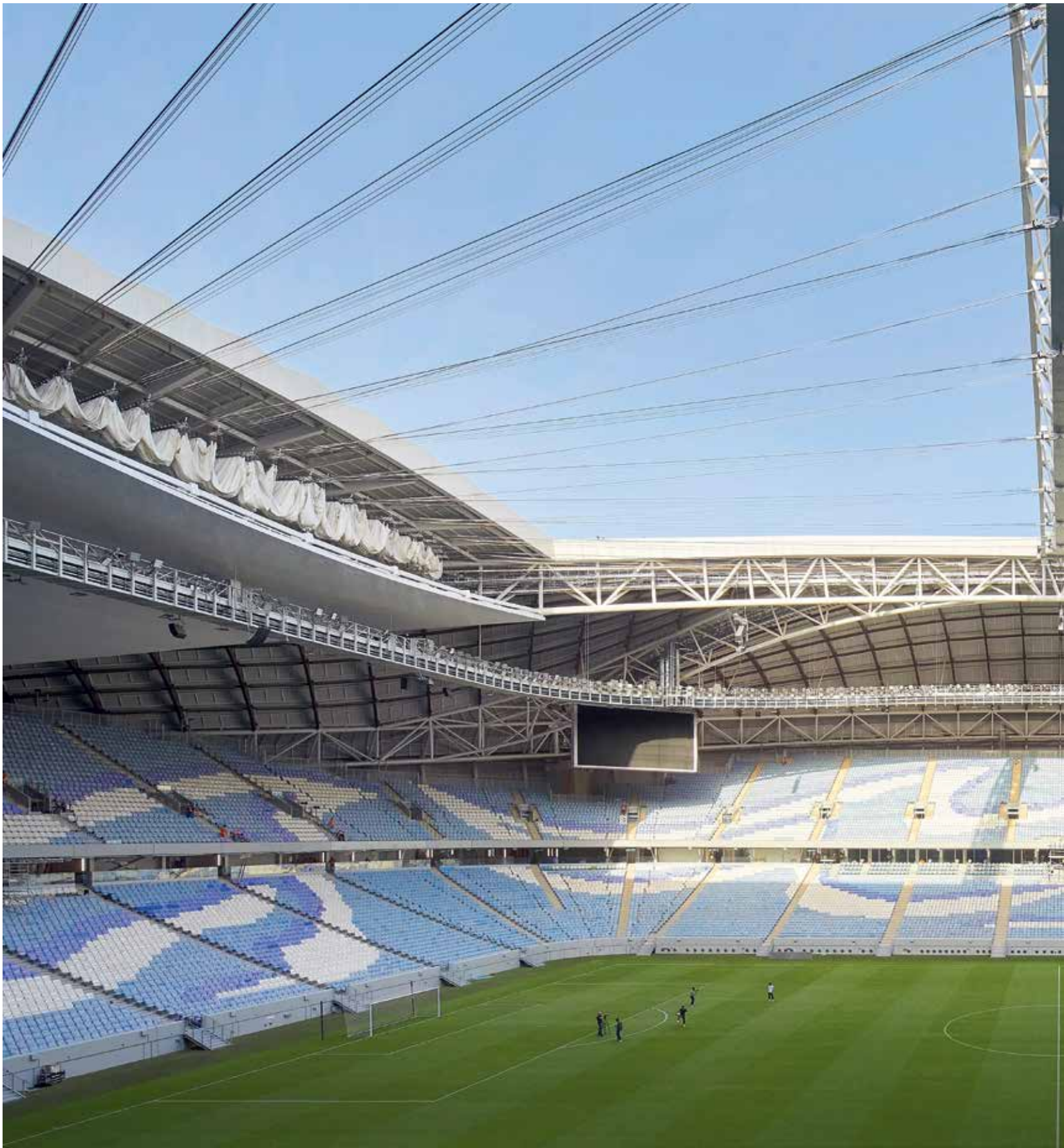
Seestadt aspern
Vienna, Austria

PRECAST ELEMENTS:

Leier Baustoffe

PROJECT DESCRIPTION:

“Seestadt aspern” is one of Europe’s largest urban development projects. The high-quality living space for 20,000 people is due for completion in 2028. The frame of the building is made of precast concrete parts. A special kind of aesthetics results from the combination of wooden prefab facades and concrete balconies.



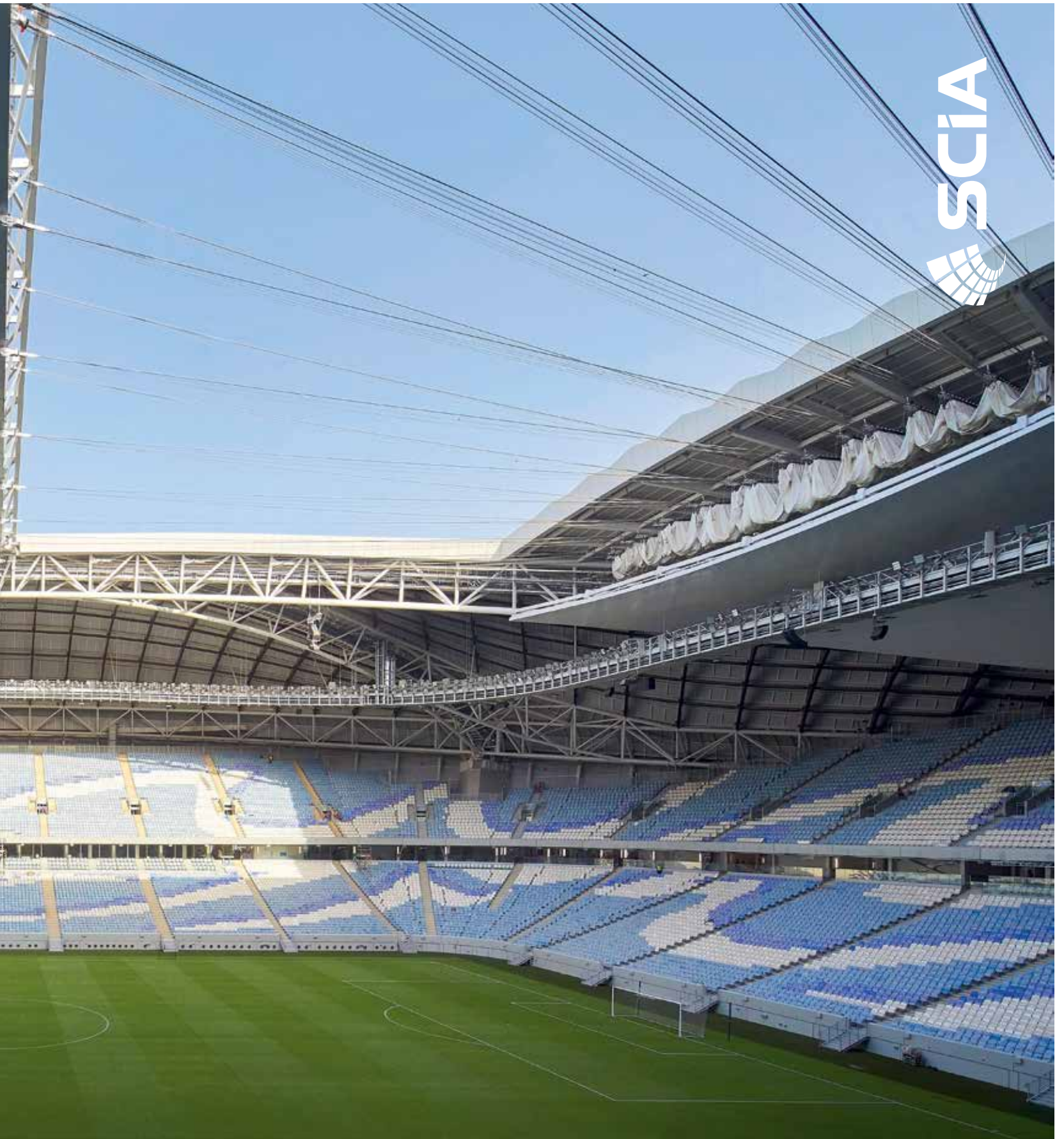
SCIA is one of the world's leading software developers for structural engineering, making full use of the Open BIM process.

SEGMENT: DESIGN

COMPANY SIZE: 92 Employees

LOCATIONS: **Herk-de-Stad**, Arnhem, Ashby-de-la-Zouch, Brno, Gurmels, Lille, Prague, Žilina

WEBSITE: www.scia.net



REFERENCE PROJECT:

Al Janoub Stadium

Al Wakrah, Qatar

ENGINEERING OFFICE: AECOM

PROJECT DESCRIPTION:

The Al Janoub Stadium can be completely closed up, allowing for air-conditioning of the pitch as well as the stands. The roof construction above the 40,000 seats was inspired by dhow boats, the traditional sailing vessels of the region, and is reminiscent of the sails rippling in the wind.



RISA is a leading provider of structural design and analysis software for the structural engineering industry.

SEGMENT: DESIGN

COMPANY SIZE: 33 Employees

LOCATION: **Foothill Ranch**

WEBSITE: www.risa.com



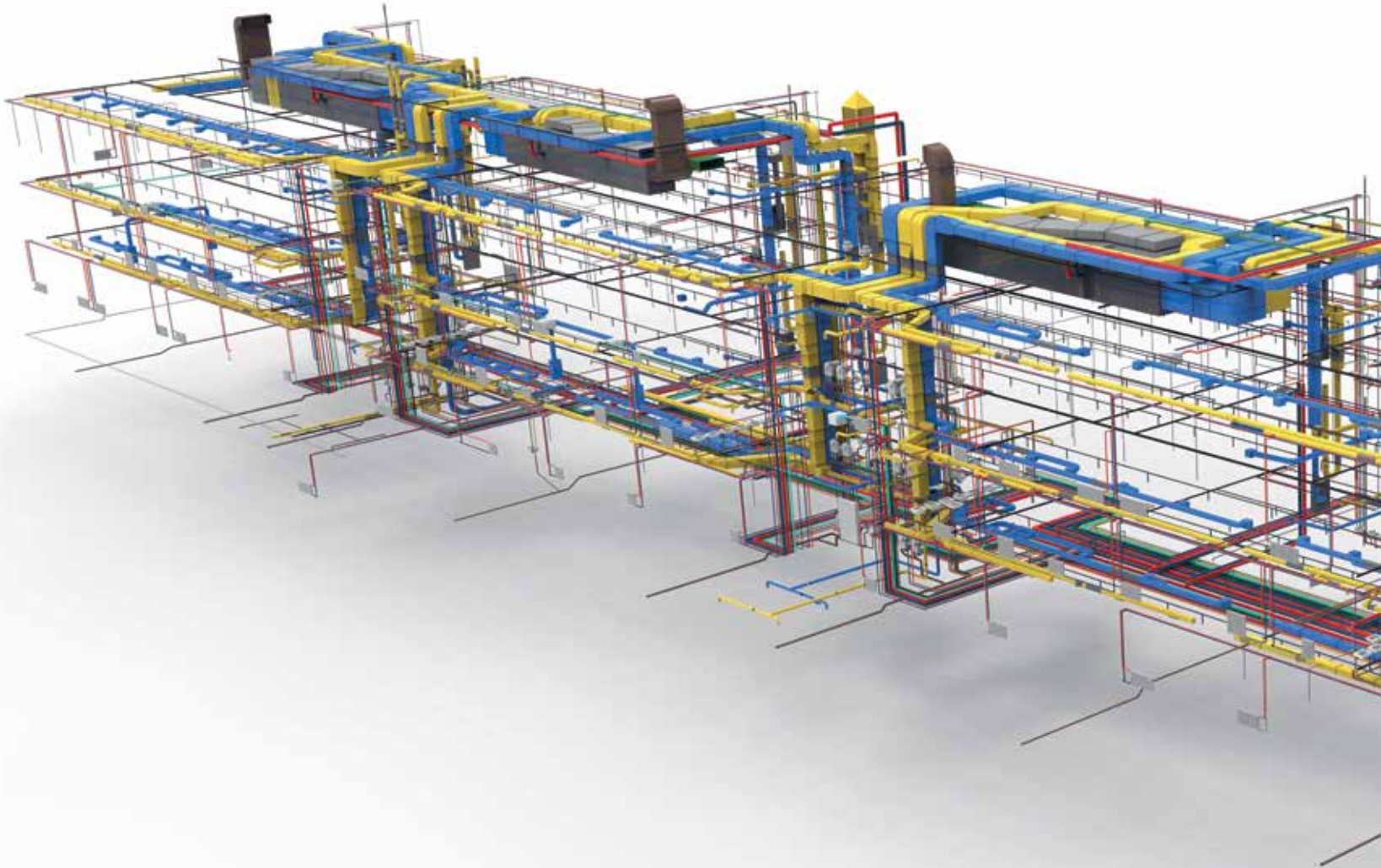
REFERENCE PROJECT:

**North Carolina A&T
College of Education
Greensboro, USA**

ENGINEERING OFFICE: Stewart

PROJECT DESCRIPTION:

The structure's 26 meter-long by 12-meter wide, two-story cantilever is a dramatic statement for the future of the university. In addition, an adjacent three-story entry lobby includes tiered open space, an architectural stairwell and a cantilevered glass canopy.



DATA DESIGN SYSTEM

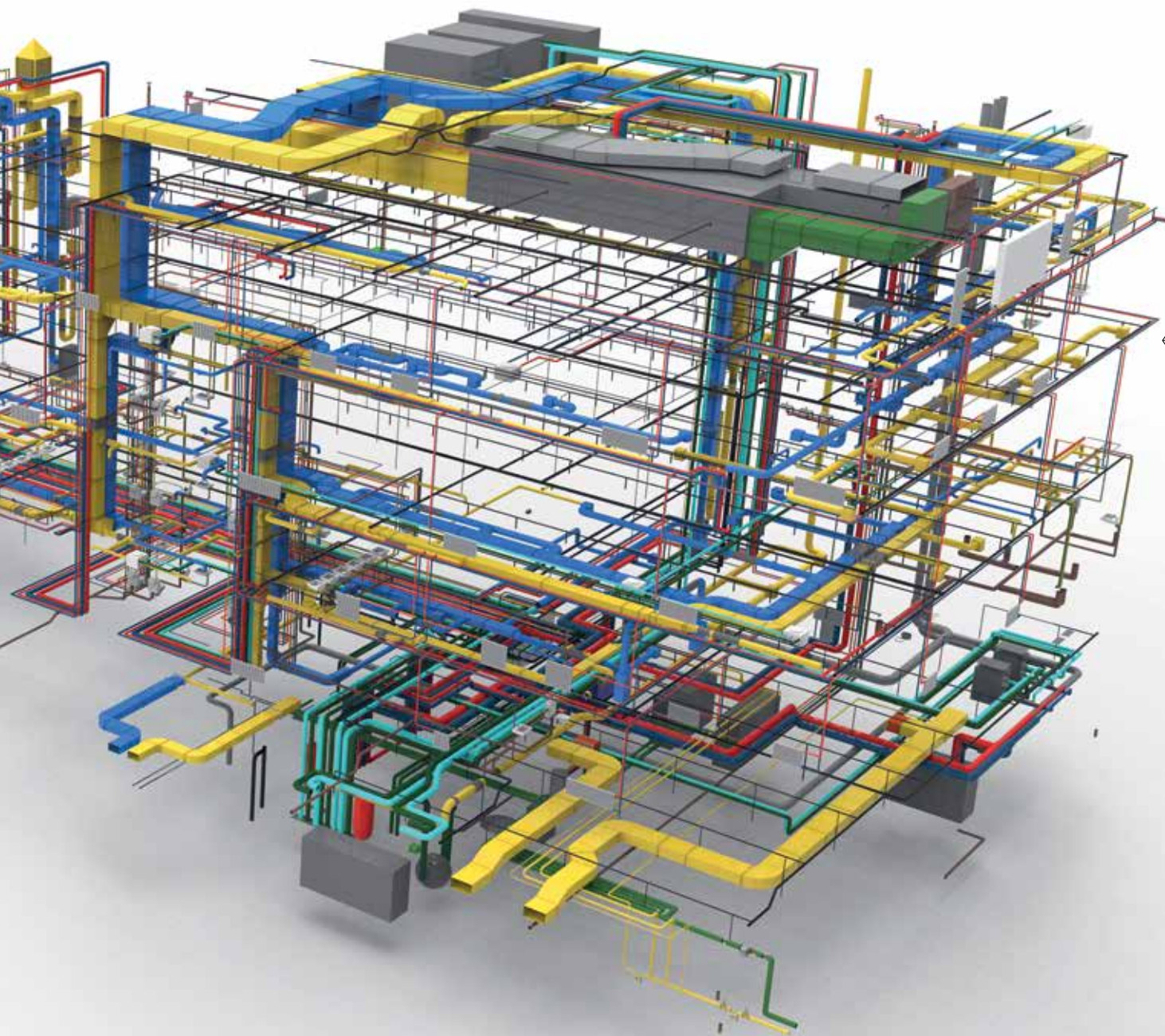
Data Design System (DDS) has been developing innovative BIM solutions to design, calculate, simulate and document building services projects since 1984.

SEGMENT: DESIGN

COMPANY SIZE: 114 Employees

LOCATIONS: **Stavanger**, Ascheberg, Augsburg, Leonding, Lützen, Utrecht

WEBSITE: www.dds-cad.de



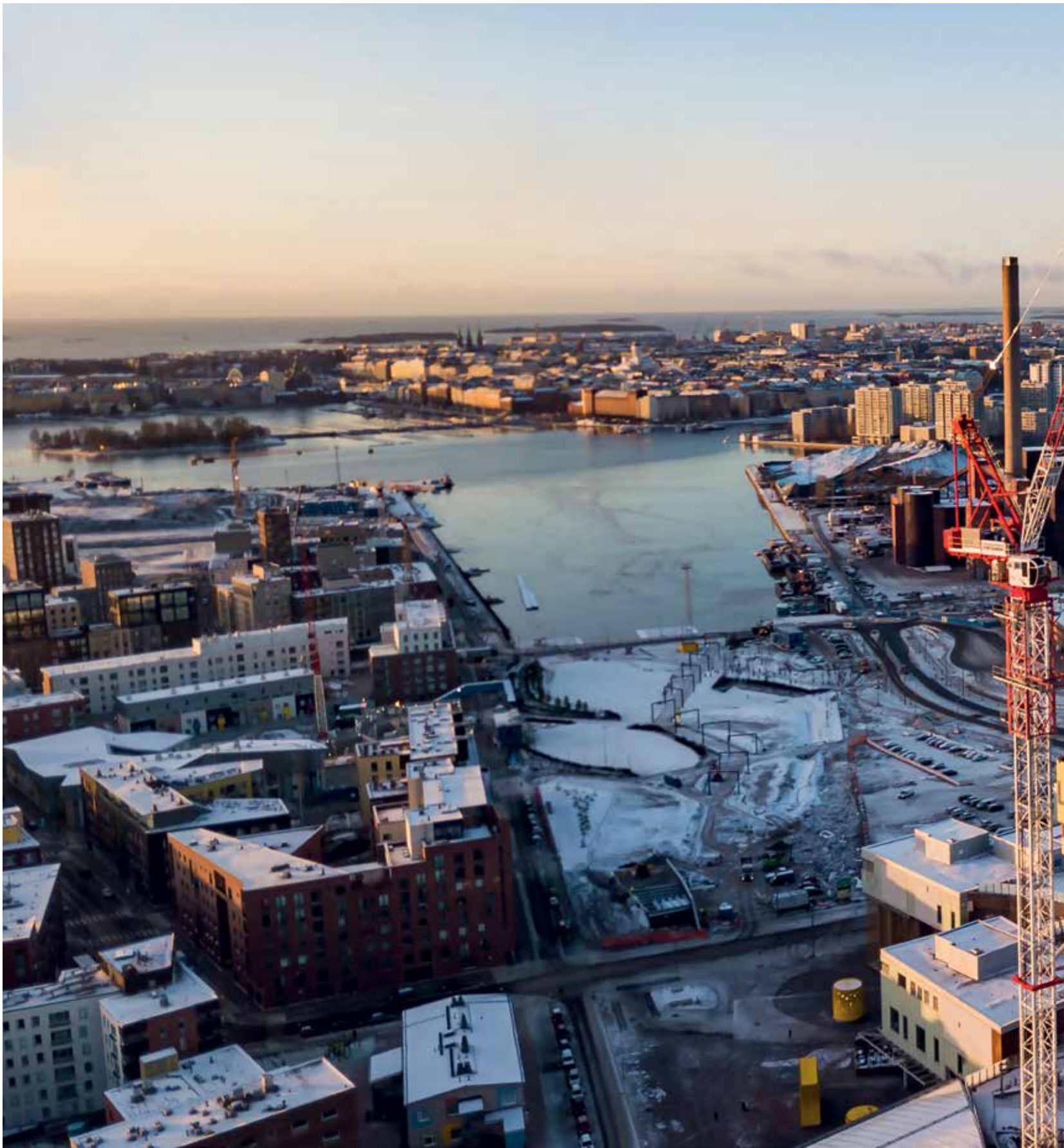
REFERENCE PROJECT:

Training Center
Southern Germany

ENGINEERING OFFICE: Quednau

PROJECT DESCRIPTION:

The training center was a great challenge for architects and designers: Workshops, training rooms and common rooms were to be closely linked with one another and contained in an area measuring close to 15,000 m². The engineering office took on execution planning of the technical building equipment.



SOLIBRI

Solibri offers a universally applicable software solution for quality check and BIM model analysis for an efficient construction workflow process.

SEGMENT: DESIGN

COMPANY SIZE: 64 Employees

LOCATIONS: **Helsinki**, Hamburg, Leeds, Madrid, Scottsdale

WEBSITE: www.solibri.com



REFERENCE PROJECT:

REDI / Loisto Tower
Helsinki, Finland

ARCHITECTS: SRV Group

PROJECT DESCRIPTION:

The tower, rising 124 meters high, has 32 floors with a higher-than-usual ceiling height of almost three meters. It offers stunning views in every direction – to the south, the sea far off in the distance; to the west, the city; to the north, the Vanhankaupunginlahti Bay and beyond that, Helsinki's archipelago to the east.



dRofus is one of the world's leading providers of BIM-based planning, data management and collaboration tools for the entire building lifecycle.

SEGMENT: DESIGN

COMPANY SIZE: 32 Employees

LOCATIONS: **Oslo**, Adelaide, Antibes, Cleveland, Lincoln, Malmö, Melbourne, San Francisco, Sydney

WEBSITE: www.drofus.no



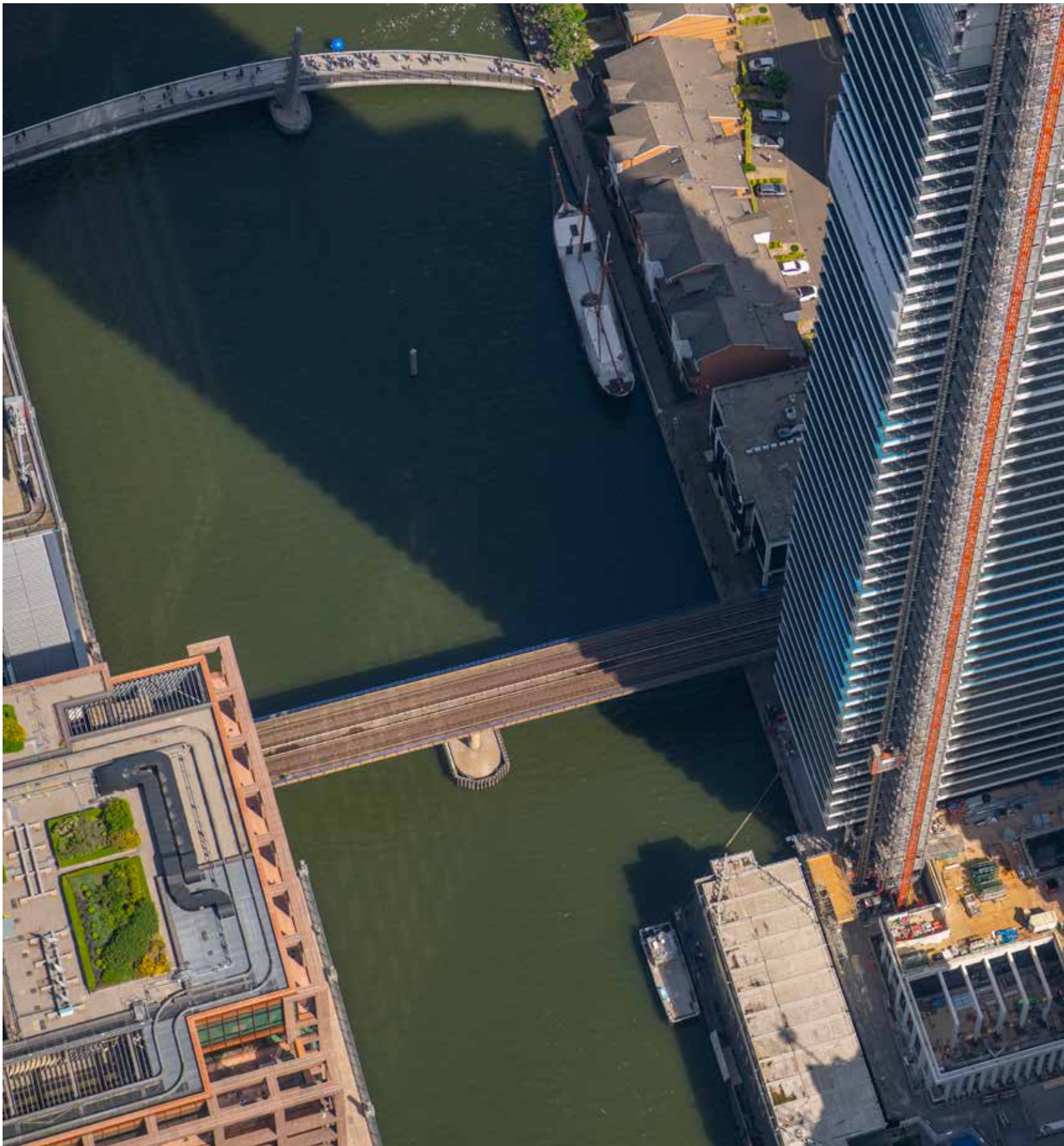
REFERENCE PROJECT:

New Deichman Library
Oslo, Norway

ARCHITECTS: Atelier Oslo & Lund/Hagem Architects

PROJECT DESCRIPTION:

The new Deichman Library with an area of 18,000 m² will also be home to a movie theater, lounges and a restaurant. It is a pioneering effort in terms of energy efficiency and reducing greenhouse gas emissions. The glass facades were designed to meet high thermal and climate specifications without any problems.



BLUEBEAM[®]

Bluebeam develops innovative technology solutions that set the standard for project efficiency and collaboration for architects, engineers and construction professionals worldwide

SEGMENT: BUILD

COMPANY SIZE: 423 Employees

LOCATIONS: **Pasadena**, Brisbane, Chicago, Copenhagen, Dallas, London, Manchester (USA), Munich, San Diego, Stockholm

WEBSITE: www.bluebeam.com



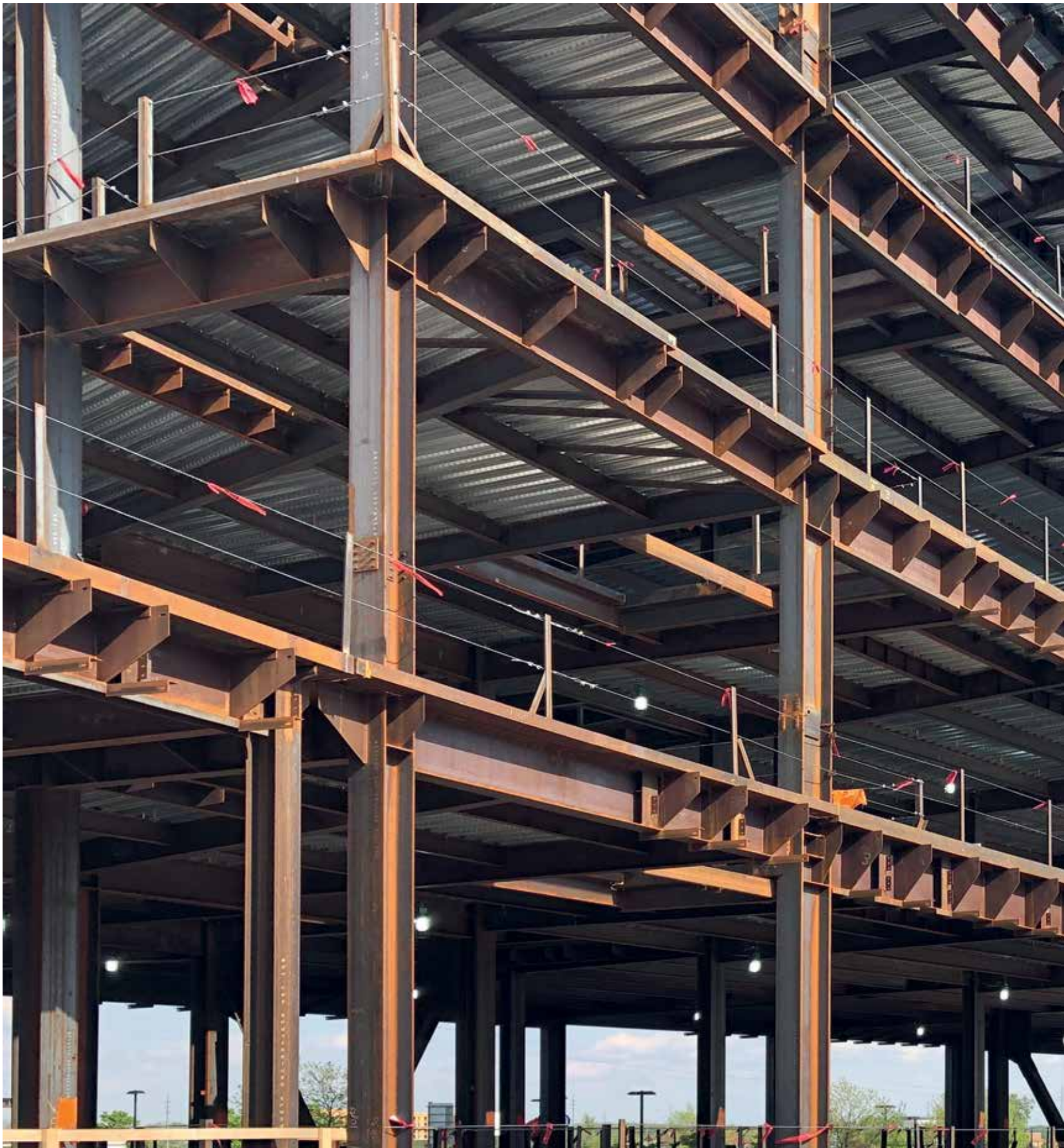
REFERENCE PROJECT:

Wardian London **London, Great Britain**

CONTRACTOR: Ballymore

PROJECT DESCRIPTION:

The luxury settlement Wardian London consists of two 55- and 50-story towers with 764 apartments and 4,000 circumferential balconies, each with a vertical sky garden. Bluebeam increased productivity between the construction site and office while reducing installation times by one day per week and on-site inspection times by 20%.



SDS/2 is a leading provider of BIM software solutions for the structural steel detailing industry.

SEGMENT: BUILD

COMPANY SIZE: 59 Employees

LOCATION: Lincoln

WEBSITE: www.sds2.com



REFERENCE PROJECT:

**Parkview Health Hospital
Fort Wayne, USA**

STEEL DETAILER: Mold-Tek Technologies

PROJECT DESCRIPTION:

Parkview Health's new six-story, 51,200 m² medical tower in Fort Wayne will allow the hospital to add 72 inpatient beds in the top three floors. Roughly 19,000 m² of the tower will be shell space, allowing for future expansion plans based on forecasted growth.



NEVARIS

NEVARIS develops integrated commercial and construction business software and advanced apps for the construction site.

SEGMENT: BUILD

COMPANY SIZE: 179 Employees

LOCATIONS: **Bremen**, Berlin, Elixhausen, Karlsruhe, Lohne, Munich

WEBSITE: www.nevaris.com



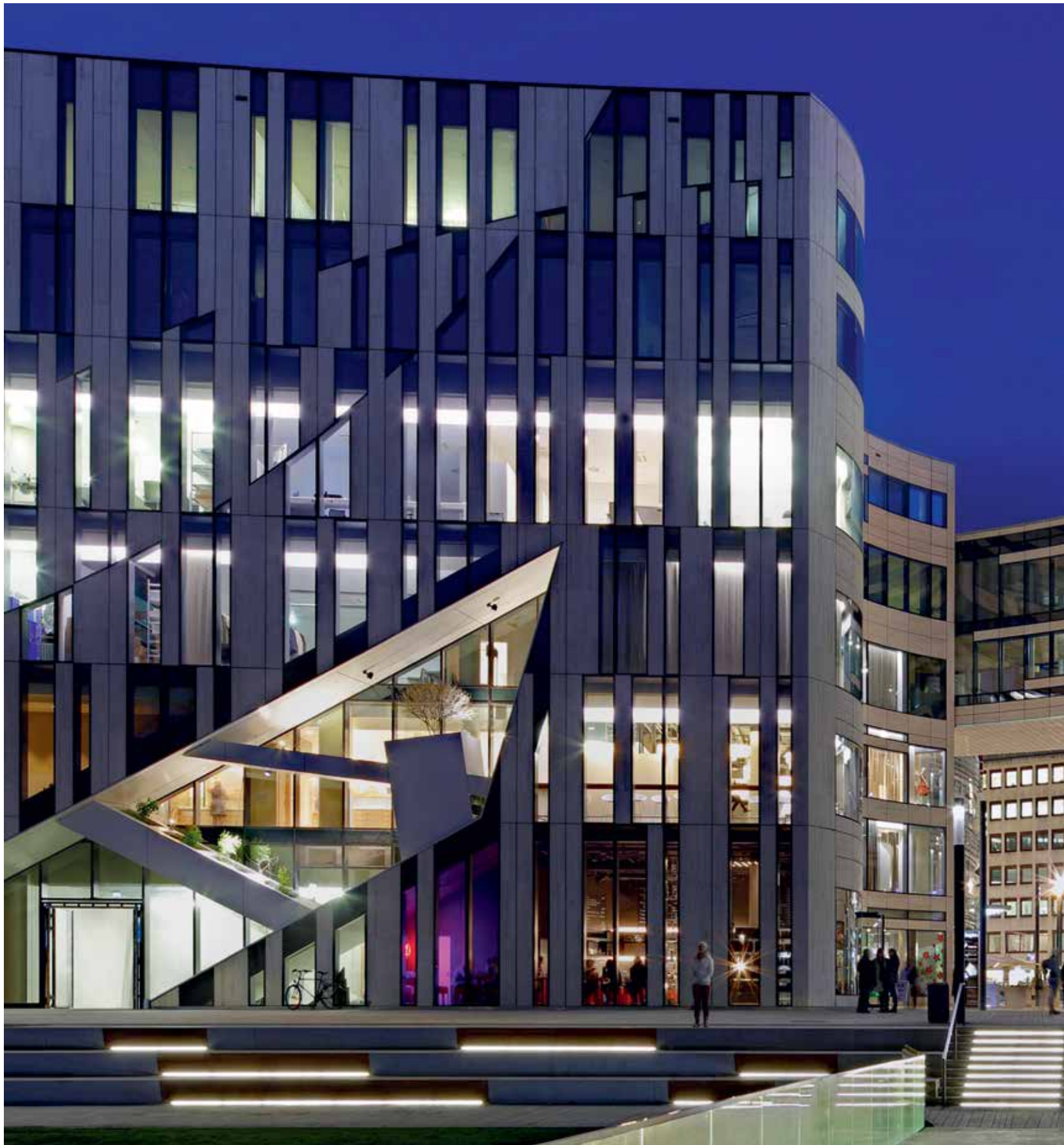
REFERENCE PROJECT:

Brenner Base Tunnel
Pfon, Austria

CONTRACTOR: Porr AG

PROJECT DESCRIPTION:

The “Pfon-Brenner” contract section is the largest Austrian part of what is to date Europe’s largest construction project – the Brenner Base Tunnel – which will be the world’s longest underground railway connection. With a total length of 64 km, it will connect Austria and Italy by rail.



CREM SOLUTIONS

Spacewell Germany is a leading provider of software solutions for modern, commercial property management.

SEGMENT: MANAGE

COMPANY SIZE: 57 Employees

LOCATION: Ratingen

WEBSITE: www.spacewell-germany.com



REFERENCE PROJECT:

Kö-Bogen
Düsseldorf, Germany

COMMERCIAL
REAL ESTATE MANAGEMENT: Zech Immobilien Management

PROJECT DESCRIPTION:

The “Kö-Bogen” has made a name for itself beyond the region as an international architectural icon in the heart of Düsseldorf. The approximately 39,000 m² of floor space comprising retailers, restaurants and offices are managed by Zech Immobilien Management GmbH with the help of iX-Haus.



SPACEWELL

Spacewell is a software and technology firm focused on making building management smarter.

SEGMENT: MANAGE

COMPANY SIZE: 256 Employees

LOCATIONS: **Antwerp**, Apeldoorn, Heteren, Hyderabad, New York, Paris, Ratingen, Stockholm

WEBSITE: www.spacewell.com



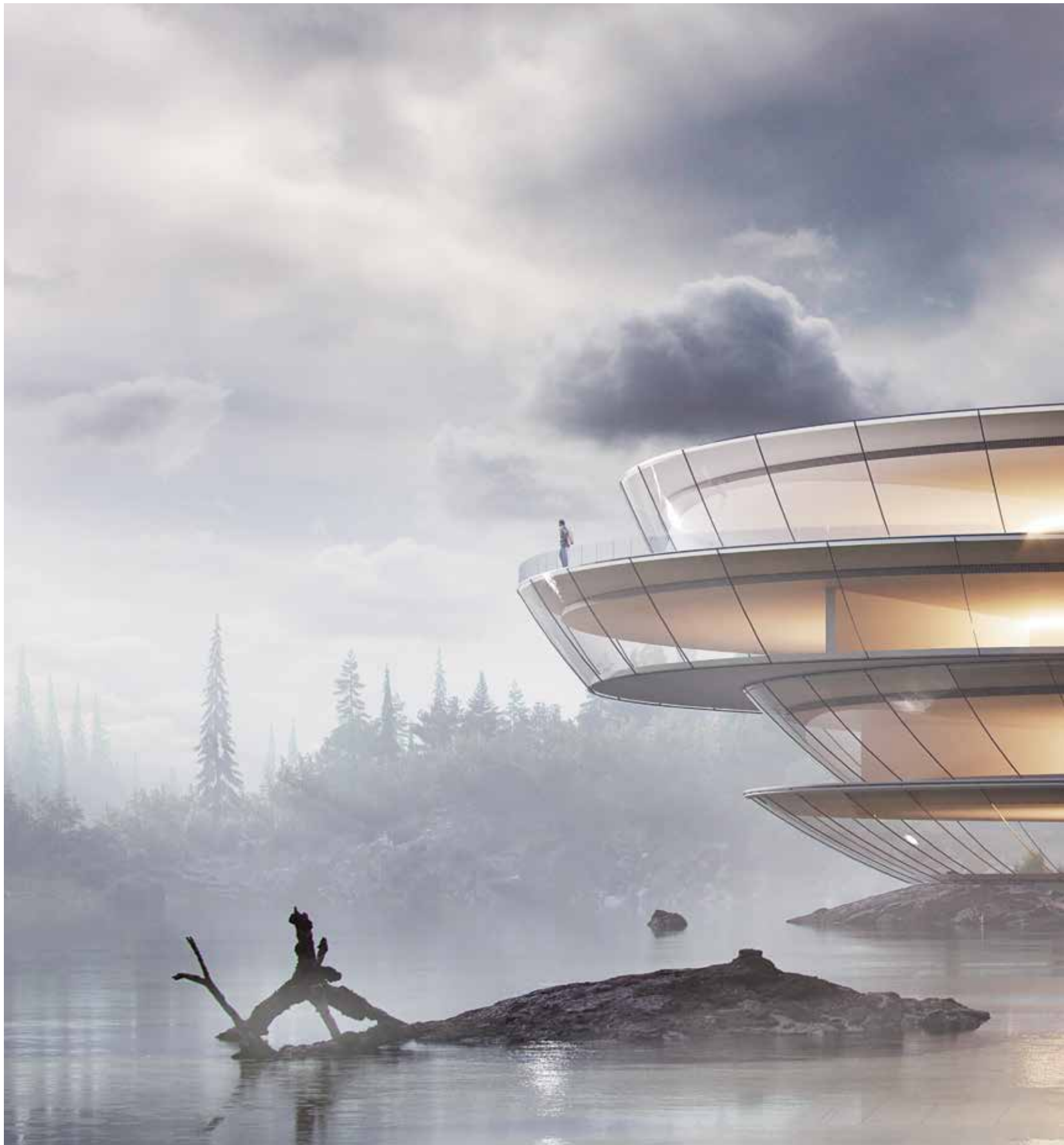
REFERENCE PROJECT:

Van Roey Group Headquarters
Rijkevorsel, Belgium

BUILDING MANAGEMENT: Van Roey Services

PROJECT DESCRIPTION:

Groep Van Roey's new HQ is a 4,000 m² nearly zero-energy building. It uses techniques such as cold & heat storage and concrete core activation to ensure a permanently pleasant, comfortable and healthy working environment.



MAXON

MAXON Computer is a worldwide leading developer of professional solutions for 3D modeling, painting, animation and rendering.

SEGMENT: MEDIA & ENTERTAINMENT

COMPANY SIZE: 150 Employees

LOCATIONS: **Friedrichsdorf**, Bedford, Montreal, Los Angeles, Paris, Tokyo

WEBSITE: www.maxon.net

**REFERENCE PROJECT:**

The Landing
Germany

VISUALIZATION: Benjamin Springer

PROJECT DESCRIPTION:

The architectural concept behind “The Landing” is inspired by Springer’s home state of Thuringia and the music of Robert Rich. In this work, experiences of nature and architectonic impulses from the time he spent with architect and engineer Werner Sobek juxtapose nature and modernity in a fascinating contrast.

PICTURE CREDITS

Cover: Irina Viner-Uzmanova Rhythmic Gymnastics Center, Moscow, Russia;
Architects: Creative Production Union PRIDE

Pages 8–9: Bunjil Place, Narre Warren, Australia;
Architects: fjmt; Image: Trevor Mein

Pages 10–11: Tamina Bridge, St. Gallen, Switzerland;
Engineering office: Leonhardt, Andrä und Partner; Image: Bastian Kratzke

Pages 12–13: National Veterans Memorial and Museum, Columbus, USA;
Architects: Allied Works Architecture; Image: Jeremy Bittermann

Pages 14–15: Finnish Pavilion, Tokyo, Japan;
Design: Metsä Wood and Helin & Co. Architects

Pages 16–17: Seestadt aspern, Vienna, Austria;
Precast elements: Leier Baustoffe GmbH & Co KG; Image: Lisa Payr

Pages 18–19: Al Janoub Stadium, Al Wakrah, Qatar;
Engineering office: AECOM

Pages 20–21: North Carolina A&T College of Education, Greensboro, USA;
Engineering office: Stewart

Pages 22–23: Training Center, Southern Germany;
Engineering office: Quednau

Pages 24–25: REDI/Loisto Tower, Helsinki, Finland;
General contractor: SRV Group

Pages 26–27: New Deichman Library, Oslo, Norway;
Architects: Atelier Oslo and Lund/Hagem Architects; Image: Jiri Havran

Pages 28–29: Wardian London, London, Great Britain;
Contractor: Ballymore; Image: Jason Hawkes

Pages 30–31: Parkview Health Hospital, Fort Wayne, USA;
Steel detailer: Mold-Tek Technologies Limited

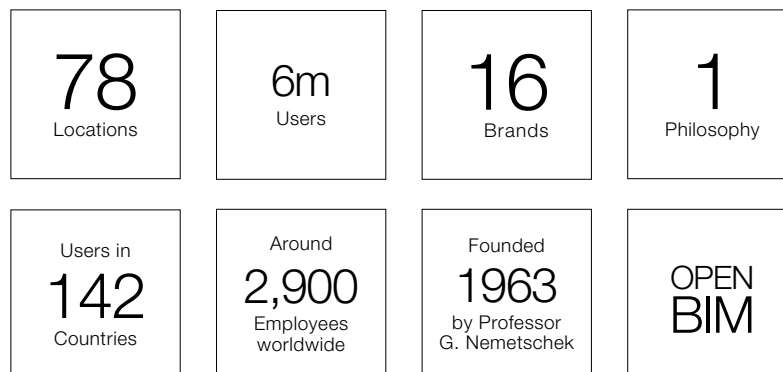
Pages 32–33: Brenner Base Tunnel, Pfors, Austria;
Contractor: PORR AG

Pages 34–35: Kö-Bogen, Düsseldorf, Germany;
Commercial real estate management: Zech Immobilien Management GmbH

Pages 36–37: Van Roey Group Headquarters, Rijkevorsel, Belgium;
Building Management: Van Roey Services

Pages 38–39: The Landing, Germany;
Visualization: Benjamin Springer

NEMETSCHEK GROUP



NEMETSCHEK SE
Konrad-Zuse-Platz 1
81829 Munich
Tel.: +49 89 540459-0
Fax: +49 89 540459-414
investorrelations@nemetschek.com
www.nemetschek.com

NOTE: This supplement is an editorial report about the NEMETSCHEK Group, which was published as an unaudited element together with the 2019 Annual Report.

**NEMETSCHEK
GROUP**

NEMETSCHEK SE
Konrad-Zuse-Platz 1
81829 Munich
Tel.: +49 89 540459-0
Fax: +49 89 540459-414
investorrelations@nemetschek.com
www.nemetschek.com